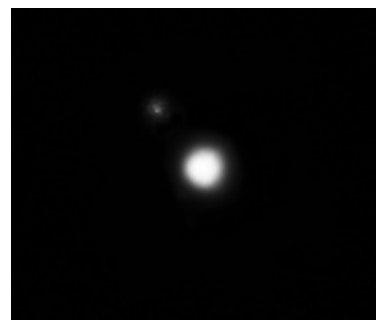


Object Name

Object Type	Double Star
RA (Topocentric)	21h 28m 52s
Dec (Topocentric)	+70° 38' 36"
RA (2000.0)	21h 28m 40s
Dec (2000.0)	+70° 33' 39"
Azimuth	23° 31' 50"
Altitude	+35° 43' 48"
Axis Position Angle	46° 00'
Magnitude	3,20
Angular Separation (arcsecs)	0,2000
Mag. 1st Component	3,2000
Mag. 2nd Component	6,6000
Transit Time	09:31
Hour Angle	-06h 48m 22s
Air Mass	1,71
Rise/Set Notes	Always above horizon.
Source Catalog	WDS (Washington Double Star Catalog)
WDS ID	LAB 6
Components	Aa,Ab
Position angle 1	47
Position angle 2	226
Dates	1971 2007
Date	06/04/2020
Time	02:37:11 DST
Constellation	Cepheus
Constellation (Abbrev.)	Cep
Spectral Type	B2III
Screen X	408,04
Screen Y	249,46
Sidereal Time	14:41
Julian Date	2458945,53049286
Click Distance	0,0000
Frame Size (arcmins)	0,0333
Angular Separation (Prior Object)	42° 59' from NGC6720
Position Angle (Prior Object)	17.8° from NGC6720
Catalog Number	0
Celestial Type	3
NGC/IC	131
Catalog	2
Constellation Number	19

WDS LAB 6



Frame Capured: 50.000

Frame Stacked :1% (500)

Telescope RC8"@F5.3

QHY 178m Cooled

Domenico De Luca